

**ON SALE  
10AM  
SATURDAY  
25TH  
FEBRUARY**



Concept image only



# Own a Brand New Home at The Ponds

## Priced from only \$490,000<sup>^</sup>

### Introducing The Parklife Collection Limited Release. Contemporary homes.

#### Looking for a great deal on a new home?

Then you'll love The Ponds. Imagine living in one of Sydney's most sought after new suburbs with a unique 80 hectare nature corridor, where you're surrounded by parks & playing fields, ovals and water features; with shopping, new schools plus a range of transport options all nearby.

You'll also love The Parklife Collection: versatile, modern 3 & 4 bedroom homes, offering you plenty of room indoors and outdoors, upstairs and downstairs for a modern family lifestyle:

- Intelligently designed, free flowing interiors
- Gourmet kitchens with island kitchen bench
- Outdoor entertaining areas
- Walk in wardrobe & ensuite in main bedroom
- Built-ins in all bedrooms

All are located adjacent to parkland and boast an impressive range of quality features and fixtures.

**Buy off the plan before construction starts and you'll be able to take full advantage of the NSW Government's Stamp Duty savings on homes up to \$600,000.**

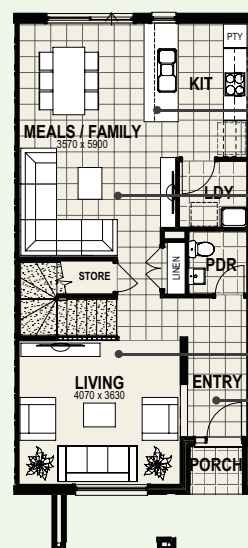
**Hurry! New homes on sale this weekend – Don't miss out. Call or visit The Ponds today for more information.**

**The Ponds Sales & Display Centre, Riverbank Drive, The Ponds. Open 7 days 10am to 5pm. UBD: 148 P3.**

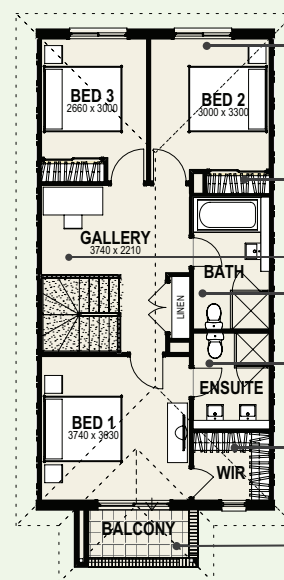
#### TYPICAL 3 BEDROOM + GALLERY COURTYARD HOME

Typical ground floor plan

Typical first floor plan



- Island bench kitchen
- Free flowing open plan living areas
- Separate living area
- Impressive tiled porch/entry way

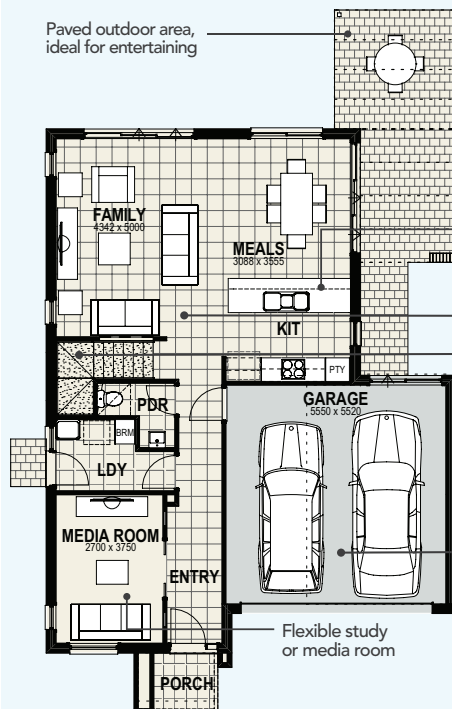


- Intelligent layout. All bedrooms situated upstairs, away from general living areas
- Built-ins in all bedrooms
- Gallery Area
- Large traditional bathroom with bath
- Master bedroom ensuite
- Walk-in wardrobes in master bedroom
- Balcony off master bedroom

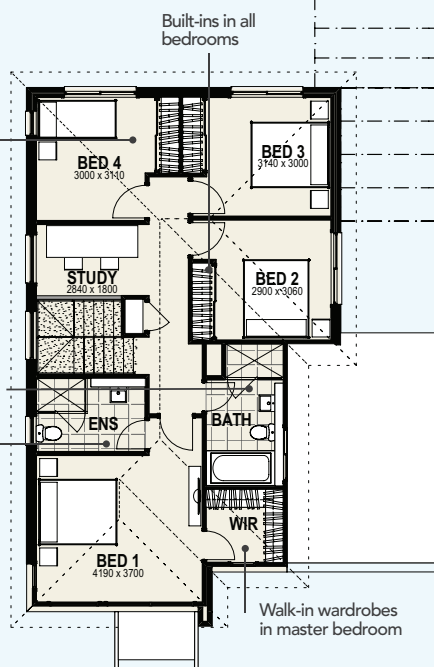
#### TYPICAL 4 BEDROOM FAMILY HOME

Typical ground floor plan

Typical first floor plan



- Intelligent layout. All bedrooms situated upstairs, away from general living areas
- Island bench kitchen
- Free flowing open plan living areas
- Under stairs storage
- Large traditional bathroom with bath
- Master bedroom ensuite
- Big double garage, remote access
- Flexible study or media room



- Built-ins in all bedrooms
- Intelligent layout. All bedrooms situated upstairs, away from general living areas
- Walk-in wardrobes in master bedroom



[www.theponds.com.au](http://www.theponds.com.au)

9629 1212

LANDCOM

australand

<sup>^</sup> 2 homes priced at \$490,000. Purchasers must rely on their own enquires and the Contract for Sale for all details, terms and conditions. Prices and availability subject to change without notice. Landcom and Australand reserve the right to vary prices and withdraw any lot from sale. Images are indicative only. \*Terms and conditions apply. Purchasers must obtain their own advice and satisfy themselves about their eligibility for the NSW Government Home Builders Bonus for new home sales. ATRP1267\_BA